

Internal Water Governance Team

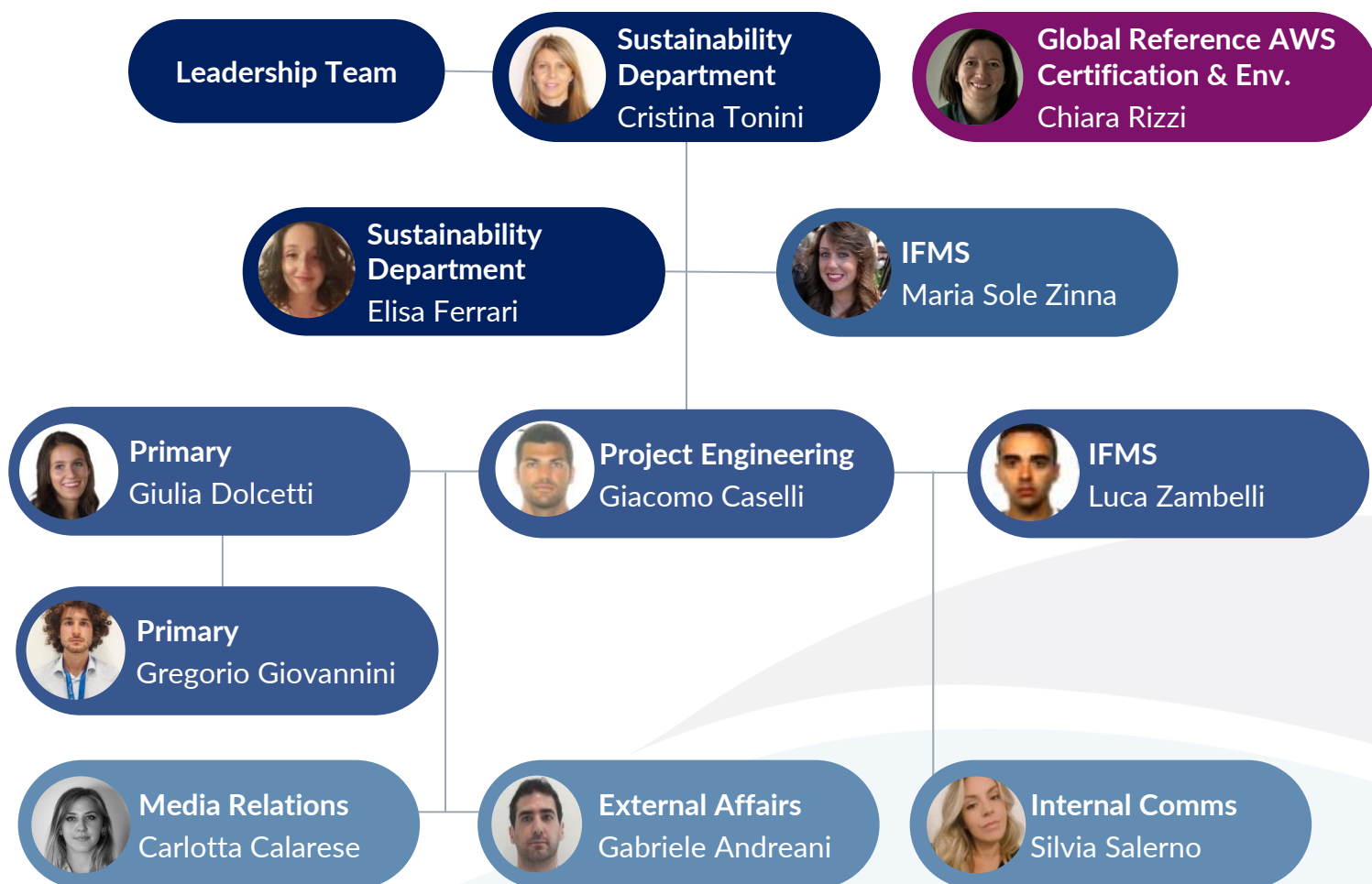
Organizational Chart

At PMMTB, the internal water management structure involves several key positions of responsibility, in charge of both **operational activities related to water management** and compliance with applicable legal and regulatory obligations within the plants.

The team is also responsible for the implementation of the **Alliance for Water Stewardship (AWS) Standard**, through targeted actions both within the site and in the catchment area, with the aim of achieving compliance in all five *outcome* areas of the AWS Standard.






Some team members (highlighted in dark blue) also play a specific role in monitoring observations and verifying compliance, ensuring that the requirements of local laws, regulations and the company standard are fully respected.

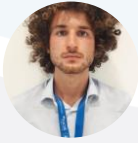
The **organizational chart** of the internal water governance team, as well as their roles and responsibilities are illustrated below:



Internal Water Governance Team

Roles and Responsibilities

	Cristina Tonini Manager Manufacturing Sustainability MTB	<ul style="list-style-type: none">• Ensures compliance with the organisation's Environment, Health and Safety standards• Sponsors sustainability projects• Promotes sustainability best practices• Shares water challenges with leadership team
	Elisa Ferrari Sustainability Engineer	<ul style="list-style-type: none">• Leads the internal AWS team• Ensures that water-related incidents are analysed, and that mitigation and prevention actions are taken• Collaborates with the authorities• Ensures the execution of the site water balance and identifies the WEI/KPIs also participating in the definition of the glidepath• Identifies and guides water-related improvement actions
	Maria Sole Zinna IFMS Engineer	<ul style="list-style-type: none">• Co-leads the internal AWS team• Conducts investigations of water-related non-compliances• Ensures the execution of the site water balance and identifies the WEI/KPIs also participating in the definition of the glidepath• Collaborates with the various departments to identify water-related improvement actions
	Gabriele Andreani Coordinator Sustainability & Public Policy	<ul style="list-style-type: none">• Conducts external communication with key stakeholders (industrial and institutional)• Coordinates the preparation of webinars and workshops on water• Involves institutional Stakeholders for water-related projects in the catchment area
	Carlotta Calarese Media Relation Coordinator	<ul style="list-style-type: none">• Coordinates external communication activities via social media and the company website



Gregorio Giovannini

Process Lead

- Monitors water consumption in the Primary Department
- Investigates over-consumption and prepares an action plan
- Identifies water-related improvement actions in the Primary Process
- Defines settings on equipment in the Primary Process
- Ensures that primary water settings are under control



Luca Zambelli

IFMS Engineer

- Ensures that the wastewater treatment plant and/or other water-related infrastructure is operating effectively and efficiently
- Conducts investigations of water-related non-compliances
- Collaborates with different departments to identify water-related improvement actions
- Leads the implementation of water-related improvement actions in Utilities processes



Silvia Salerno

Internal Communications Lead

- Leads the Internal Communication master plan
- Coordinates the Sustainability and Projects department in the preparation of the water awareness campaign: Company updates and information panels



Giacomo Caselli

Project Engineer

- Prepares the project business case
- Defines project priorities and ensures budget approval
- Guides project execution to meet agreed timelines
- Coordinates the activities of contractors



Giulia Dolcetti

Process Lead

- Monitors water consumption in the Primary Department
- Investigates over-consumption and prepares an action plan
- Identifies water-related improvement actions in the Primary Process
- Defines settings on equipment in the Primary Process